

NX 200t

KEY SPECS

2.0L Twin Scroll Turbo L4 Engine
Atkinson cycle¹
6-Speed Automatic Transmission
4-Cylinder Direct Injection Engine
235hp, 250 lb-ft torque¹
AWD (Dynamic Torque System)
Standard

STANDARD FEATURES

NuLuxe seat surfaces
8-Speaker Audio System
8-way power-adjustable front
seats
Smart Key System with Push
Button Start⁵
Drive Mode Select
Backup Camera with
guidance lines in 7-inch
multimedia display⁶
One-piece door handle with
hidden key barrel and
integrated lighting
17-inch alloy wheels
Lexus Spindle Grille
LED Headlamps
Dual exhaust with chrome tips

PREMIUM PACKAGE

(INCLUDES STANDARD
FEATURES PLUS)
Power and Heated steering
wheel
Driver Seat Memory
18-inch split 5 spoke alloy
wheels
LED High beam headlamps
Auto-dimming sideview
mirrors with auto reverse
tilt-down
Power Liftgate
Power Moonroof
Roof Rails
120V (100W) power outlet
Garage Door Opener

LUXURY PACKAGE

(INCLUDES PREMIUM
FEATURES PLUS)
Navigation system with
Remote Touchpad Interface⁷
10-Speaker Audio System
Leather Seat Surfaces
Interior wood trim
Blind Spot Monitor with Rear
Cross-Traffic Alert^{8,4}
Intuitive Parking Assist
Rain-sensing wipers

EXECUTIVE PLUS PACKAGE

(INCLUDES LUXURY
FEATURES PLUS)
Power-folding rear seats
Wireless Phone Charger
Head Up Display
Auto high beam feature
Lane Departure Alert³
Radar cruise control⁹
Pre-Collision System¹⁰

NX 200t



SERIES 1

Navigation system with remote touch interface⁷

Nuluxe *F SPORT* seating with contrast stitching

F SPORT leather-wrapped steering wheel & paddle shifters

F SPORT leather-wrapped shiftknob

LFA inspired instrumentation

G-force meter

Silver performance interior trim

Black Headliner

Aluminum pedals

F SPORT suspension and steering tuning

F SPORT 18-inch wheels

Unique *F SPORT* grille

Rain-sensing wipers

SERIES 2

Dynamic Radar Cruise Control⁹

Wireless Phone Charger

Head Up Display

Adaptive Variable Suspension

Lane Departure Alert³

NX 300h

**LEXUS
HYBRID
DRIVE**

KEY FEATURES

2.5L Hybrid Powertrain Atkinson Cycle¹

Unique 5-spoke alloy wheel

Optitron meters

Hybrid System Indicator

EV Drive Mode Select

Electronically Controlled Braking System

Pre-Collision System¹⁰

Dynamic Radar Cruise Control⁹

Wireless Phone Charger

Power-folding rear seats

Lane Departure Alert³

Head Up Display

Auto high beam feature

Metallic Rear Bumper Fins

EXTERIOR COLOURS



EMINENT WHITE
0085



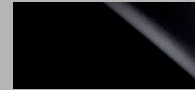
NEBULA GREY
PEARL 01H9



ATOMIC SILVER
01J7



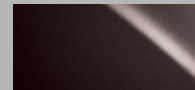
STARLIGHT BLACK
MICA 02I7



OBSIDIAN
02I2



MATADOR RED
MICA 03R1



FIRE AGATE PEARL
04V3



ULTRASONIC BLUE
MICA 08U1

Colours and options are subject to change. Colour swatches are representations of the proposed colour and do not represent the final product. For latest information, please see your local Lexus dealer.

Specifications

NX 2015

November 13, 2014

	NX 200t	NX 300h
Interior		
Steering		
Tilt & Telescopic Steering Wheel	•	
Steering Wheel Audio Controls	•	•
Leather Wrapped Steering Wheel	•	•
Heated Steering Wheel		•
Power Tilt & Telescopic Steering Wheel		•
Climate Control		
Dual Zone Automatic Climate Control	•	•
Dust, Pollen, Deodorizing Air Filter	•	•
Audio		
AM/FM Stereo	•	•
USB Audio Input	•	•
Bluetooth Capability	•	•
8 Speakers	•	
Lexus Display Audio	•	•
10 Speakers		•
Seats		
Heated Front Seats	•	
Lumbar Support (Power) - Driver	•	•
8-way Power Passenger Seat	•	•
Fold Down Rear Seat (60/40)	•	•
Recline - Rear	•	
Seat Material : NuLuxe	•	
Leather Seat Surfaces		•
Driver Seat Memory System		•
Heated & Ventilated Front Seats		•

	NX 200t	NX 300h
Power Switches for Rear Seat Remote Release on Front Dashboard and in Cargo Area		.
Windows		
Power Windows with Auto Up/Down for All Windows	.	.
Rear Privacy Glass	.	.
Instrumentation		
Backup Camera	.	.
Tachometer	.	
Head-Up Display		.
Remote Touch Interface		.
Voice-activated SD Card Based Navigation System with Remote Touch		.
Mirrors		
Auto Dimming Rear View Mirror	.	.
Illuminated Vanity Mirrors	.	.
Trim		
Leather Wrapped Shift Knob	.	.
Woodgrain Trim		.
Trunk/cargo		
Cargo Area Mat	.	.
Tonneau Cover	.	.
Security		
Power Door Locks	.	.
Lights		
Fadeout Dome Lamp	.	.
Cargo Lamp	.	
Storage		

	NX 200t	NX 300h
Centre Console Box with Armrest	•	•
Owners Wallet	•	•
Driver and Passenger Door Pockets	•	•

Flooring

Carpet Floor Mats	•	•
All Season Floor Mats	•	•

Convenience

Convenience

Cruise Control	•	•
Smart Key System	•	•
Push Button Start	•	•
Front & Rear Cup Holders	•	•
REAR CENTER ARMREST	•	•
Sunglass Storage in Front Console Box	•	•
Garage Door Opener		•
Power Back Door		•
Wireless Charging		•
120V/100-watt Power Outlet		•
Clearance and Backup Sensors		•
Dynamic Radar Cruise Control		•

Instrumentation

TFT Multi Information Display	•	•
-------------------------------	---	---

Storage

Storage: Cargo Net	•	•
--------------------	---	---

Safety

Safety

Passenger Seat Cushion Airbag	•	•
-------------------------------	---	---

	NX 200t	NX 300h
Dual Stage Driver & Passenger Airbag Supplemental Restraint System (SRS)	•	•
Front Passenger Occupancy Classification Indicator	•	•
Front Seat Mounted Side Airbags	•	•
Driver Knee Airbag	•	•
Front and Rear Side Curtain Airbags	•	•
Front Seatbelt Pre-Tensioners and Force Limiters	•	•
Anchor Points for Child Restraint Seats	•	•
LED Brake Lamps	•	•
First Aid Kit	•	
Engine Immobilizer	•	•
Lane Keeping Assist System		•
Pre Collision System		•
Rear Cross Traffic Alert		•

Warning

Low Fuel	•	•
Direct Tire Pressure Monitoring System	•	•
Front Driver and Passenger Seat Belt Warning	•	•

Exterior

Body Style

4-Door Sport Utility	•	•
----------------------	---	---

Wheels

17" Aluminum Alloy Wheels	•	
Wheel Locks	•	•
Unique 18" Alloy Wheels		•

Exterior

Rear Bumper Protector	•	•
Roof Mounted Spoiler	•	•
Dual Exhaust	•	

	NX 200t	NX 300h
--	---------	---------

Mirrors

Power-Adjustable Heated Mirrors	•	•
Integrated Signal Lamps	•	•
Auto-dimming Side View Mirrors		•

Wipers

Variable Intermittent Wipers	•	•
Windshield Wiper De-Icer	•	•
Rain Sensing Wipers		•

Lights

Headlamp Washers	•	•
LED Daytime Running Lights	•	•
LED Clearance Lamps	•	•
LED Fog Lamps	•	•
LED Headlamps - Low Beam	•	•
Automatic High Beam		•
Auto Leveling Headlamp System		•
LED Headlamps - High Beam		•

Mechanical

Transmission

6-Speed	•	
Automatic	•	
Super Electronically Controlled Transmission (Super ECT)	•	
Lock Up Torque Converter	•	
Electronically Controlled Continuously Variable Transmission (ECVT)		•

Engine

2.0 Litre	•	
4-Cylinder	•	•

	NX 200t	NX 300h
DOHC	•	•
16-Valve	•	•
Dual Variable Valve Timing with intelligence (VVT-i)	•	
Turbocharged	•	
Intercooled	•	
Atkinson Cycle	•	•
Premium Fuel Recommended	•	
Direct-Injection 4-Stroke Gasoline Engine Superior version Turbo (D-4ST)	•	
2.5 Litre		•
Variable Valve Timing with Intelligence (VVT-i)		•
Electronically Fuel Injected		•
Lexus Hybrid Drive		•
Cooled Exhaust Gas Recirculation (EGR) System		•
EV Mode		•

Mechanical Features

All Wheel Drive (AWD)	•	•
Vehicle Stability Control (VSC)	•	•
Traction Control (TRAC)	•	•
Hill-start Assist Control (HAC)	•	•
Drive Mode Select (Sport, Eco and Normal Modes)	•	•
Dynamic Torque Control System	•	

Steering

Electric Power Steering	•	•
-------------------------	---	---

Suspension

Independent - Front	•	•
Macpherson Struts - Front	•	
Coil Springs - Front	•	•
Stabilizer Bar - Front	•	•
Independent - Rear	•	•
Double Wishbone Type - Rear	•	•

	NX 200t	NX 300h
Coil Springs - Rear	•	•
Stabilizer Bar - Rear	•	•
Macpherson Gas Struts - Front		•

Tires

P225/65R17 Tires	•	
Mud Snow Tires	•	•
Temporary Spare Tire	•	•

Brakes

Front Ventilated Disc Brakes	•	•
Rear Discs	•	•
Electric Parking Brake (EPB)	•	•
Antilock Braking System (ABS)	•	•
Brake Assist (BA)	•	•
Electronic Brake Force Distribution (EBD)	•	•
Electronically Controlled Brake System (ECB)		•

Dimension

Dimensions

Height mm (in.)	1645 (64.8)	1645 (64.8)
Width mm (in.)	1845 (72.6)	1845 (72.6)
Length mm (in.)	4630 (182.3)	4630 (182.3)
Wheelbase mm (in.)	2660 (104.7)	2660 (104.7)
Front Track mm (in.)	1580 (62.2)	1580 (62.2)
Rear Track mm (in.)	1580 (62.2)	1580 (62.2)
Front Headroom mm (in.)	970.8 (38.22), With Moonroof: 950.3 (37.41)	950.3 (37.41)
Rear Headroom mm (in.)	968.4 (38.13), With Moonroof: 967.2 (38.08)	967.2 (38.08)
Front Legroom mm (in.)	1088 (42.8)	1088 (42.8)
Rear Legroom mm (in.)	918 (36.1)	918 (36.1)
Front Shoulder Room mm (in.)	1455 (57.3)	1455 (57.3)
Rear Shoulder Room mm (in.)	1405 (55.3)	1405 (55.3)

	NX 200t	NX 300h
Seating Capacity	5	5
Base Curb Weight kg (lbs.)	1755 (4050)	1835 (4180)
Gross Vehicle Weight kg (lbs.)	2360 (5200)	2420 (5335)
Cargo Capacity m ³ (cu.ft.)	0.5 (17.66), Rear Seat Folded: 1.545 (54.56)	0.475 (16.77), Rear Seat Folded: 1.520 (53.68)
Towing Capacity kg (lbs.)	907 (2000)	680 (1500)
Fuel Capacity litres (gal.)	60 (15.9)	56 (14.8)
Fuel Consumption - City/Highway/Combined L/100km	10.8 / 8.8 / 9.9	7.1 / 7.7 / 7.4
Fuel Consumption - City/Highway/Combined mpg	26 / 32 / 29	40 / 37 / 38
Compression Ratio	10.0	12.5
Horsepower (kW)	235 (175)	194 (145)
Torque (N.m)	258 (350) / 1650-4000	152 (206) / 4400-4900
Coefficient of Drag (cd.)	0.33	0.34
Approach Angle (Degrees)	28.7, F Sport: 16.8	28.7
Departure Angle (Degrees)	24.0	24.5
Turning Circle m. (ft.)	5.7 (18.7)	5.7 (18.7)
Ground Clearance mm (in.)	175 (6.9)	170 (6.7)

Option Packages

NX 200t

Executive

Dynamic Radar Cruise Control , Wireless Charging , Head-Up Display , Automatic High Beam , Pre Collision System , Lane Keeping Assist System , Power Switches for Rear Seat Remote Release on Front Dashboard and in Cargo Area , Unique 18" Alloy Wheels .

F SPORT Series 1

10 Speakers , Clearance and Backup Sensors , F SPORT Front Grille , F SPORT badging , Remote Touch Interface , Voice-activated SD Card Based Navigation System with Remote Touch , G meter , F SPORT LED fog lamps , Auto Leveling Headlamp System , LED Headlamps - High Beam , Rear Cross Traffic Alert , Blind Spot Monitor System , Steering Wheel Paddle Shifters (A/T) , F SPORT Seats , Sport Tuned Suspension , Sport-Tuned Suspension , Delete: Ventilated Front Seats , Delete Digital Compass in Electrochromic Rear View Mirror , Interior Trim: F SPORT Shift Knob , Aluminum Sport Pedals with Rubber Inserts , F SPORT Scuff Plates , F SPORT 18" Alloy Wheels , Rain Sensing Wipers .

F SPORT Series 2

Dynamic Radar Cruise Control , Wireless Charging , Head-Up Display , Automatic High Beam , Pre Collision System , Lane Keeping Assist System , Adaptive Variable Front Suspension (AVS) , Adaptive Variable Rear Suspension (AVS) .

Premium

Power Back Door , Garage Door Opener , 120V/100-watt Power Outlet , Power slide / tilt Moonroof , Aluminum Roof Rails , Compass , Memory Mirrors , Auto-dimming Side View Mirrors , Driver Seat Memory System , Power Tilt & Telescopic Steering Wheel , Heated Steering Wheel , Heated & Ventilated Front Seats , 18" Aluminum Alloy Wheels .

Luxury

10 Speakers , Clearance and Backup Sensors , Remote Touch Interface , Voice-activated SD Card Based Navigation System with Remote Touch , Auto Leveling Headlamp System , LED Headlamps - High Beam , Rear Cross Traffic Alert , Blind Spot Monitor System , Leather Seat Surfaces , Delete Digital Compass in Electrochromic Rear View Mirror , Woodgrain Trim , Rain Sensing Wipers .