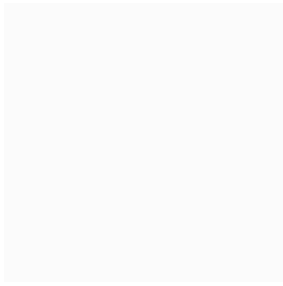
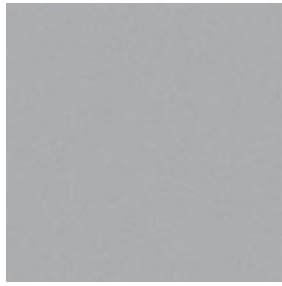


EXTERIOR COLOURS



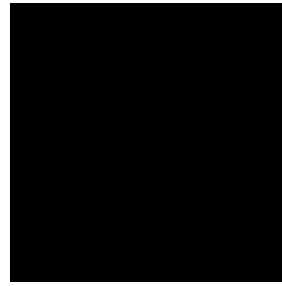
0077
Starfire Pearl



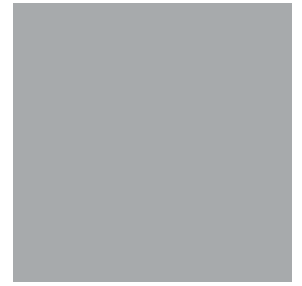
01G0
Smoky Granite Mica



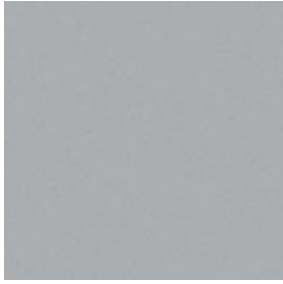
01G1
Tungsten Pearl



0212
Obsidian



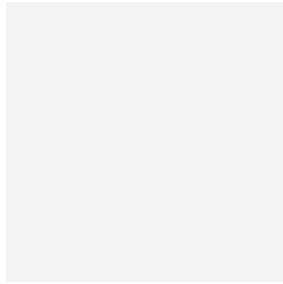
03R1
Matador Red Mica



04T5
Truffle Mica



04U7
Satin Cashmere Metallic



08U0
Black Sapphire Pearl

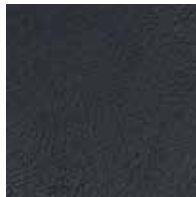
INTERIOR COLOURS AND WOOD TRIMS



Parchment
Leather



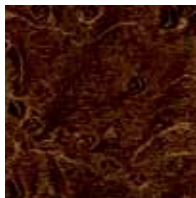
Light Grey
Leather



Black
Leather



Medium Brown
Walnut



Espresso Bird's-Eye
Maple

COLOUR AVAILABILITY

	Parchment Leather	Light Grey Leather	Black Leather
Starfire Pearl	■		■
Smoky Granite Mica		■	■
Tungsten Pearl		■	■
Obsidian	■		■
Matador Red Mica	■		■
Truffle Mica	■		■
Satin Cashmere Metallic	■		■
Black Sapphire Pearl	■	■	
Medium Brown Walnut Trim	■		
Espresso Bird's-Eye Maple Trim		■	■

Visit our Web site and try on a colour. lexus.ca

Colours and interiors are subject to change during model year. Please see your Lexus Dealer for details.

GENERAL

TYPE	Five-passenger luxury sedan
CONSTRUCTION	Welded-steel unibody
CURB WEIGHT	1,624 kg/3,580 lb

WHEELS



17-inch split-5-spoke alloy wheels
STANDARD



17-inch 10-spoke Graphite-polished alloy wheels
AVAILABLE

BODY AND DIMENSIONS

HEADROOM
front/rear w/moonroof
950/935 mm - 37.4/36.8 in
front/rear w/panorama glass roof
960/940 mm - 37.8/37.0 in

SHOULDER ROOM
front/rear
1,455/1,430 mm - 57.3/56.3 in

HEIGHT
1,450 mm/57.1 in



WIDTH 1,821 mm/71.7 in

TRUNK CAPACITY (max)
416 litres/14.7 cubic feet

FUEL-TANK CAPACITY
70 litres/15.4 gallons

LEGROOM
front/rear
1,072/912 mm - 42.2/35.9 in



WHEELBASE 2,776 mm/109.3 in

OVERALL LENGTH 4,854 mm/191.1 in

ENGINE

TYPE	60° V6, aluminum block and heads
DISPLACEMENT	3.5 litres
VALVETRAIN	Four cam, four valves per cylinder, with Dual Variable Valve Timing with intelligence (Dual VVT-i)
COMPRESSION RATIO	10.8:1
HORSEPOWER AT RPM	272 hp @ 6,200 ³
TORQUE AT RPM	254 lb-ft @ 4,700 ³
EMISSION RATING	Tier 2 Bin 5 Emissions Rating

PERFORMANCE

FUEL ECONOMY ESTIMATES	10.9/7.2/9.3 L/100 km	26/39/30 mpg ⁵ (city/highway/combined)
AERODYNAMIC DRAG COEFFICIENT	0.28	
TURNING CIRCLE	11.2 m/36.7 ft	

DRIVETRAIN

DRIVE WHEELS	Front-wheel drive
TRANSMISSION	Six-speed sequential-shift automatic Electronically Controlled Transmission with intelligence (ECT-i)
FINAL DRIVE RATIO	3.685:1

CHASSIS

SUSPENSION	Front: Independent, MacPherson struts with coil springs, gas-pressurized shock absorbers and stabilizer bar Rear: Independent, dual-link MacPherson struts with coil springs, gas-pressurized shock absorbers and stabilizer bar
STEERING	Engine-speed-sensing, progressive power-assisted rack-and-pinion. 3.2 turns, lock to lock
BRAKES	Four-wheel power-assisted discs, with four-sensor, four-channel Antilock Braking System (ABS), Electronic Brake-force Distribution (EBD) and Brake Assist (BA). ⁶ 11.7-inch ventilated front, 11.1-inch solid rear discs
WHEELS AND TIRES	17-inch split-5-spoke alloy wheels with P215/55R17 all-season tires. Full-size spare tire on alloy wheel

STANDARD LUXURY FEATURES

LUXURY AND CONVENIENCE

SmartAccess¹⁵ with push-button Start/Stop
Dual-zone automatic climate control with interior air filter, smog sensor and automatic recirculation mode
Power tilt-and-telescopic steering column
Power tilt-and-slide moonroof with one-touch open/close and sliding sunshade
Power windows with one-touch auto open/close feature
Exterior glass with UV reduction
Electrochromic (auto-dimming) outside mirrors
Remote-linked window and moonroof opening
Retained accessory power for moonroof and windows
Electrochromic (auto-dimming) inside rearview mirror with compass
Power door locks
Cruise control
Centre console with storage bin and accessory power outlet
Dual cupholders, front and rear
Illuminated entry system with fadeout
HomeLink^{®16} universal transceiver to operate compatible garage, gate, home lighting and home security systems

SEATING AND TRIM

10-way power driver's and front passenger's (including lumbar) heated seats
Lexus Memory System with two settings to control power driver's seat and outside mirrors
Height-adjustable headrests for all seats
Leather-trimmed seat surfaces
Medium brown walnut or espresso bird's-eye maple wood interior trim
Leather-trimmed steering wheel and shift knob
Carpeted floor mats

COMMUNICATION, AUDIO AND NAVIGATION

Lexus 8-speaker Premium Sound System with Automatic Sound Levelizer (ASL) and in-dash, single-feed, six-disc CD auto-changer
Roof-mounted fin antenna
XM[®] Satellite Radio^{1,10}
Auxiliary iPod^{™8}/MP3/Windows Media[®] Audio (WMA) port
Bluetooth[®] capability¹¹
Bluetooth[®] audio¹¹ profile for wireless integration of compatible music players with in-vehicle audio system

INSTRUMENTATION AND CONTROLS

Steering-wheel-mounted audio and display controls
Liquid-crystal multi-information console display
Electroluminescent instrumentation
ECO Driving indicator
Automatic on/off projector-beam headlamps with auto-off delay
Illuminated interior electronic trunk-lid and fuel-filler door releases
Outside temperature gauge

STANDARD SAFETY AND SECURITY FEATURES

SAFETY

Four-wheel power-assisted disc brakes with front ventilated discs
Four-sensor, four-channel Antilock Braking System (ABS)
Vehicle Stability Control (VSC)⁷ with cutoff switch
Traction Control (TRAC)
Brake Assist (BA)⁶
Electronic Brake-force Distribution (EBD)
Direct Tire Pressure Monitor System¹³
Integrated foglamps
Water-repellent front-door glass
Rain-sensing intermittent windshield wipers with mist cycle
Rear-window defroster with auto-off timer
Power-adjustable heated outside mirrors with integrated turn indicators and puddle lamps
Driver's and front passenger's advanced airbag system (SRS)¹⁴ with front passenger's twin-chamber airbag (SRS)¹⁴
Front and rear seat-mounted side airbags (SRS)¹⁴
Driver's and front passenger's knee airbags (SRS)¹⁴
Front and rear side curtain airbags (SRS)¹⁴
Active front headrests with whiplash protection⁴
Three-point seatbelts for all seating positions, pre-tensioners with force limiters for front and outboard rear seats
Automatic Locking Retractor/Emergency Locking Retractor (ALR/ELR) seatbelts for all passenger seating positions. Emergency Locking Retractor (ELR) only for driver's seat
Height-adjustable front shoulder belt anchors
Child Restraint Seat (CRS) tether anchor brackets for all rear seating positions
Highly rigid body structure with front and rear crumple zones
Side-impact door beams
Reinforcements in pillars and door sills
Impact-dissipating upper interior trim
Collapsible steering column

SECURITY

Vehicle theft-deterrent and engine-immobilizer system
Emergency interior trunk release
First aid kit
Tool kit

OPTION PACKAGES

NAVIGATION PACKAGE

- Voice-activated HDD Navigation System¹ with backup camera⁹
- USB audio input for iPod™⁸/compatible music player integration with audio system
- Heated and ventilated front seats

PREMIUM WITH NAVIGATION PACKAGE

Includes Navigation Package plus:

- Wood-trimmed steering wheel and shift knob
- Driver's seat power cushion extender
- Lexus Memory System for front passenger's power seat
- High-Intensity Discharge (HID) headlamps
- Dual-swivel Adaptive Front Lighting System (AFS)
- Power rear sunshade
- Intuitive Parking Assist

ULTRA PREMIUM WITH NAVIGATION PACKAGE

Includes Premium with Navigation Package plus:

- Premium leather-trimmed interior
- Mark Levinson® 14-speaker, 300-watt @ less than 0.1% THD, 20-20,000 Hz¹²
- Premium Surround Sound Audio System² with 7.1 architecture and in-dash, single-feed, six-disc DVD/CD auto-changer
- Panorama glass roof
- Premium 17-inch 10-spoke Graphite-polished alloy wheels
- Satellite trunk-mounted antenna

ACCESSORIES



All-weather floor mats

- All-weather floor mats
- Block heater
- Bodyside moulding
- Car cover
- Cargo liner
- Cargo net
- Rear spoiler
- Smart card key
- Wheel locks
- 17-inch E-Sport alloy wheels

THE BEST WAY TO FINANCE YOUR NEW ES – EASILY, QUICKLY, AFFORDABLY.

LEXUS Financial Services • Lexus Financial Services does nothing but finance or lease Lexus vehicles; thus, we know financing and we know Lexus. • Our interest rates are fully competitive and our terms flexible (up to 72 months). • Since we offer Web services, you can: A: check out our rate; B: save time by getting credit approved on-line – before checking out the vehicle(s) of your interest. • Finally, one-stop shopping (at all Lexus Dealerships) saves you time. We invite you to visit us at lexus.ca or call us at 1-800-26-LEXUS.

LEXUS CANADA. Every effort has been made to ensure the specifications and equipment shown are accurate based on information available at time of printing. In some cases, certain changes in standard equipment, options or product delays may occur, which would not be reflected in this brochure. Lexus Canada reserves the right to make these changes without notice or obligation. Your Lexus Dealer is the best source for up-to-date information.

CLUB LEXUS Lexus invites you to join us in Club Lexus, a very exceptional compilation of services, offers, special events and pertinent information available only to Lexus owners. To register for Club Lexus, please visit lexus.ca or call 1-800-26-LEXUS.