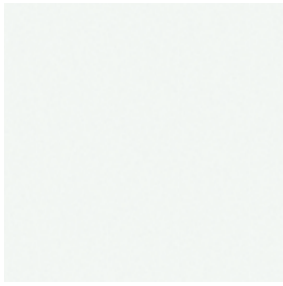


EXTERIOR COLOURS



0077
Starfire Pearl



01G1
Tungsten Pearl



01H3
Knight's Armour Metallic



0202
Black Onyx



04U7
Satin Cashmere Metallic

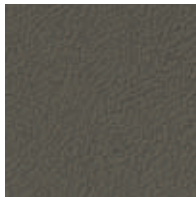


06V6
Peridot Mica

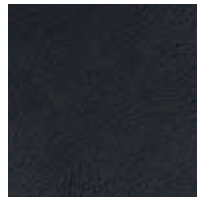
INTERIOR COLOURS AND WOOD TRIMS



Ecru
Leather



Sepia
Leather



Black
Leather



Auburn Bubinga

COLOUR AVAILABILITY

	Ecru Leather	Sepia Leather	Black Leather
Starfire Pearl		■	■
Tungsten Pearl	■		■
Knight's Armour Metallic	■		■
Black Onyx		■	■
Satin Cashmere Metallic	■		■
Peridot Mica	■		■
Auburn Bubinga Trim	■	■	■

GENERAL

TYPE	Seven-passenger luxury utility vehicle
CONSTRUCTION	Body-on-frame
CURB WEIGHT	2,326 kg/5,305 lb
APPROACH ANGLE	28°
DEPARTURE ANGLE	25°

WHEEL



18-inch 6-spoke alloy wheels
STANDARD

TOWING CAPACITY

2,948 kg/6,500 lb²²

ACCESSORIES

Block heater
Cargo mat
Cargo net
Roof rack crossbars²¹
Towing accessories

BODY AND DIMENSIONS

HEADROOM
front/outboard middle/third row
965/1,025/895 mm - 38.0/40.4/35.2
in

SHOULDER ROOM
front/middle/third row
1,408/1,455/1,384 mm - 55.4/57.3/54.5
in

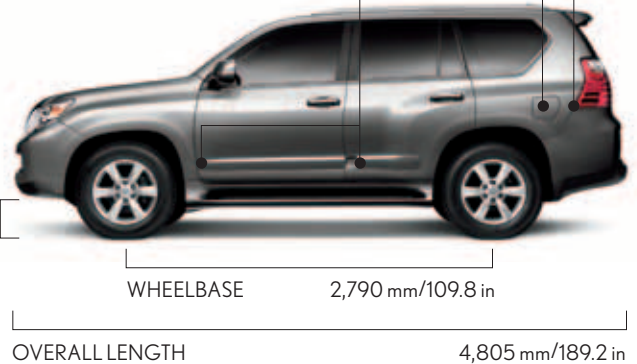


CARGO CAPACITY (max)
1,833 litres/64.7 cubic feet

FUEL-TANK CAPACITY
87 litre/19.0 gallons

LEGROOM
front/middle/third row
1,058/868/743 mm - 41.7/34.1/29.3 in

GROUND
CLEARANCE
205 mm/8.1 in



ENGINE

TYPE	90° V8, aluminum block and heads
DISPLACEMENT	4.6 litres
VALVETRAIN	Four cam, four valves per cylinder, with dual Variable Valve Timing with intelligence (Dual VVT-i)
COMPRESSION RATIO	10.2:1
HORSEPOWER AT RPM	301 hp @ 5,500 rpm ³
TORQUE AT RPM	329 lb-ft @ 3,400 rpm ³
EMISSION RATING	Tier 2 Bin 5 Emissions Rating

PERFORMANCE

FUEL ECONOMY ESTIMATES	14.1/9.8/12.1 L/100 km	20/29/23 mpg ⁵ (city/highway/combined)
TURNING CIRCLE	11.6 m/38.1 ft	

DRIVETRAIN

TYPE	Full-time four-wheel drive with TORSEN [®] limited-slip centre differential ¹⁹ (with differential lock)
TRANSMISSION	Six-speed sequential-shift automatic Super Electronically Controlled Transmission with intelligence (Super ECT-i)
TRANSFER CASE	Two-speed, 1.000:1/2.566:1
FINAL DRIVE RATIO	3.909:1

CHASSIS

SUSPENSION	Front: Independent, double-wishbone with coil springs, gas-pressurized shock absorbers and stabilizer bar Rear: Four link with coil springs, gas-pressurized shock absorbers and stabilizer bar Kinetic Dynamic Suspension System (KDSS) with automatic, electronically adjustable front and rear stabilizer bars Adaptive Variable Suspension and three-position manual height control (GX 460 Ultra Premium) Electronically Modulated Rear Air Suspension with air springs and automatic load levelling (GX 460 Ultra Premium)
STEERING	Power-assisted rack-and-pinion. 3.0 turns, lock to lock
BRAKES	Four-wheel power-assisted discs, with four-sensor, four-channel Antilock Braking System (ABS), Electronic Brake-force Distribution (EBD) and Brake Assist (BA). ⁹ 13.3-inch ventilated front, 12.3-inch ventilated rear discs
WHEELS AND TIRES	18-inch 6-spoke alloy wheels with P265/60R18 mud- and snow-rated tires. Full-size spare tire with alloy wheel

STANDARD LUXURY FEATURES

LUXURY AND CONVENIENCE

SmartAccess¹⁶ with push-button Start/Stop
Three-zone automatic climate control with interior air filter, smog sensor and automatic recirculation mode
Lexus Memory System to control power driver's seat (except lumbar), outside mirrors and steering wheel
Remote keyless entry-linked memory for driver's seat and climate control
Power tilt-and-telescopic steering column with automatic tilt-away
Power tilt-and-slide moonroof with one-touch open/close and sliding sunshade
Power windows with one-touch auto open/close
Remote-linked window and moonroof opening
Electrochromic (auto-dimming) inside rearview mirror
Electrochromic (auto-dimming), power-folding outside mirrors
Cruise control (GX 460 Premium)
Millimetre-wave dynamic radar cruise system (GX 460 Ultra Premium)
Crawl Control (GX 460 Ultra Premium)
HomeLink^{®17} universal transceiver to operate compatible garage, gate, home lighting and home security systems
Lexus Personalized Settings (LPS) to customize select electronic functions
Illuminated entry system
Illuminated scuff plates (GX 460 Ultra Premium)
Illuminated running boards
Roof rails²¹
Rear spoiler
Centre-console storage compartment
Rear and rear side privacy glass and flip-open rear glass hatch
Tonneau cover

SEATING AND TRIM

Auburn bubinga wood interior trim
Leather-trimmed interior (GX 460 Premium)
Semi-aniline leather-trimmed interior (GX 460 Ultra Premium)
Wood- and leather-trimmed steering wheel and shift knob (GX 460 Premium)
Wood- and leather-trimmed shift knob and heated steering wheel (GX 460 Ultra Premium)
8-way driver's and front passenger's (including lumbar) power seats
Heated and ventilated front seats
Heated middle-row outboard seats (GX 460 Ultra Premium)
Reclining, sliding, 60/40 split middle-row seat with 40/20/40 split seatback
Power fold-flat, 50/50 split third-row seat

COMMUNICATION, AUDIO AND NAVIGATION

Lexus voice-activated HDD Navigation System¹ with backup camera¹⁰ and Bluetooth[®] capability¹²
Mark Levinson[®] 17-speaker, 330-watt @ less than 0.1% THD, 20-20,000 Hz¹³ Premium Surround Sound Audio System² with 7.1 architecture and in-dash, single-feed, six-disc DVD/CD auto-changer
XM[®] Satellite Radio^{1,11} with XM NavTraffic^{®1}
Two sets of wireless headphones⁴ (GX 460 Ultra Premium)
USB audio input for iPod^{™19}/compatible music player integration with audio system

INSTRUMENTATION AND CONTROLS

Steering-wheel-mounted audio controls
Electroluminescent instrumentation with multi-information display
4-camera around-view monitor (GX 460 Ultra Premium)
ECO Driving indicator
Steering angle indicator (GX 460 Ultra Premium)

STANDARD SAFETY AND SECURITY FEATURES

SAFETY

Vehicle Stability Control (VSC)⁷
Four-wheel Active Traction Control (A-TRAC)
Four-wheel ventilated power-assisted disc brakes
Four-sensor, four-channel Antilock Braking System (ABS)
Brake Assist (BA)⁶
Electronic Brakeforce Distribution (EBD)
Pre-Collision System (PCS)⁸ (GX 460 Ultra Premium)
Lane departure alert (GX 460 Ultra Premium)
Driver attention monitor (GX 460 Ultra Premium)
Multi-terrain select (GX 460 Ultra Premium)
Full-time four-wheel drive with TORSEN[®] limited-slip centre differential¹⁹ and differential lock
Hill-start Assist Control (HAC)²⁰
Downhill Assist Control (DAC)²⁰
Direct Tire Pressure Monitor System¹⁴
Rain-sensing intermittent windshield wipers with mist cycle and deicer
Intermittent rear-window wiper with washer
Dual-swivel Adaptive Front Lighting System (AFS)
High-Intensity Discharge (HID) headlamps with dynamic auto-levelling
Headlamp washers (GX 460 Ultra Premium)
Intelligent high-beam headlamps
Integrated foglamps
LED taillamps
Rear-window defroster with auto-off timer
Power-adjustable outside mirrors with turn indicators, heated and auto tilt-down in reverse
Driver's and front passenger's dual-stage airbag system (SRS)¹⁵
Front seat-mounted side airbags (SRS)¹⁵
Driver's and front passenger's knee airbags (SRS)¹⁵
Middle-row outboard seat-mounted side airbags (SRS)¹⁵
Front-, middle- and third-row Roll-Sensing Curtain Airbags (RSCA) (SRS)¹⁵
Active front seat headrests¹⁸
Three-point seatbelts for all-seating positions
Seatbelt pre-tensioners for front and outboard middle-row seats. Force limiters for front seats
Automatic Locking Retractor/Emergency Locking Retractor (ALR/ELR) seatbelts for all passenger seating positions. Emergency Locking Retractor (ELR) only for driver's seat
Height-adjustable front- and middle-row shoulder belt anchors
Child Restraint Seat anchor brackets for outboard middle-row seats
Highly rigid body structure with front and rear crumple zones
Reinforced ladder-type frame
Side-impact door beams and impact-dissipating upper interior trim
Off-Road package w/off-road guidance and fuel tank protector (GX 460 Ultra Premium)
Collapsible steering column

SECURITY

Vehicle theft-deterrent and engine-immobilizer system, with in-key transponder
Tool kit
First aid kit