

## EXTERIOR



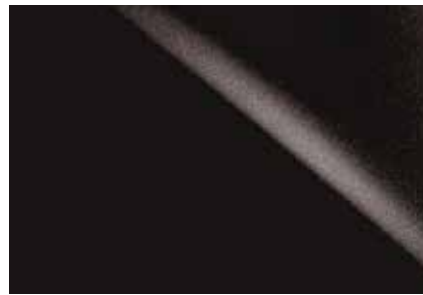
STARFIRE PEARL  
0077



ULTRA WHITE  
0083



SILVER LINING METALLIC  
01J4



STARLIGHT BLACK MICA  
0217



OBSIDIAN  
0212



NEBULA GREY PEARL  
01H9



ATOMIC SILVER  
01J7



MATADOR RED MICA  
03R1



ULTRASONIC BLUE MICA  
08U1

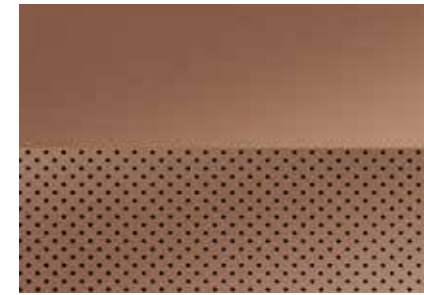
## INTERIOR

NULUXE / LEATHER



PARCHMENT

NULUXE / LEATHER



FLAXEN

NULUXE / LEATHER



BLACK

NULUXE



RIOJA RED

## INTERIOR TRIM



DARK BROWN WOOD



DARK CHARCOAL WOOD



ALUMINUM



PIANO BLACK

Take another look at colours, and try out a combination or two, at [lexus.ca](http://lexus.ca)

# FEATURES

## STANDARD LUXURY

### LUXURY AND CONVENIENCE:

SmartAccess with push-button start/stop<sup>14</sup>  
Dual-zone automatic climate control with electrostatic temperature adjustment  
White LED interior illumination with fadeout

### SEATING AND TRIM:

NuLuxe seat surfaces  
Heated front sport seats  
Leather-wrapped steering wheel  
Leather-wrapped shift knob  
Piano black trim accents  
10-way (including lumbar) power-adjustable driver seat  
8-way power-adjustable front passenger seat

### AUDIO, COMMUNICATIONS AND INSTRUMENTATION:

8-Speaker Premium Lexus Audio System  
7-inch Lexus Display Audio System  
Integrated XM<sup>®</sup> Satellite Radio<sup>15</sup>  
USB port  
Bluetooth<sup>®</sup> audio profile for wireless integration of compatible music players and automatic phonebook synchronization  
Drive Mode Select with ECO, Normal and Sport modes

## STANDARD SAFETY AND SECURITY

### ACTIVE SAFETY:

Vehicle Dynamics Integrated Management (VDIM)<sup>7</sup>  
Direct Tire Pressure Monitor System<sup>16</sup>  
High-Intensity Discharge (HID) headlamps with dynamic auto-levelling  
LED daytime running lamps  
Integrated fog lamps (excluding *F SPORT* packages)  
Headlamp washers  
Water-repellent front-door glass  
Variable-intermittent windshield wipers with de-icer  
LED brake lamps

### PASSIVE SAFETY:

Driver and front-passenger airbag system (SRS)<sup>3</sup>  
Front seat-mounted side airbags<sup>3</sup>  
Front and rear side curtain airbags<sup>3</sup>  
Driver and front passenger knee airbags<sup>3</sup>  
Child Restraint System (CRS) tether anchor brackets for rear outboard seats

### SECURITY:

Vehicle theft-deterrent system  
Engine-immobilizer system

For complete features and specs, visit [lexus.ca](http://lexus.ca)

## STANDARD SPECIFICATIONS

<b>CURB WEIGHT</b>	IS 250 RWD	1,570 kg / 3,461 lb
	IS 250 AWD	1,655 kg / 3,649 lb
	IS 350 RWD	1,630 kg / 3,593 lb
	IS 350 AWD	1,695 kg / 3,737 lb
<b>ENGINE TYPE</b>	IS 250	60 degree V6, direct fuel injection
	IS 350	60 degree V6, direct and port fuel injection
<b>DISPLACEMENT</b>	IS 250	2.5 litres
	IS 350	3.5 litres
<b>HORSEPOWER @ RPM</b>	IS 250	204 hp @ 6,400 <sup>9</sup>
	IS 350	306 hp @ 6,400 <sup>9</sup>
<b>TORQUE @ RPM</b>	IS 250	184 lb-ft @ 4,800 <sup>9</sup>
	IS 350	277 lb-ft @ 4,800 <sup>9</sup>
<b>TRANSMISSION</b>		6-speed sequential automatic Paddle shifters
	IS 350 RWD	8-speed Sport Direct Shift (SPDS) sequential automatic G AI-Shift Control
<b>TIRES</b>	Standard	P225/45R17 All-season tires
	Optional	P225/40R18 (front) P255/35R18 (rear)
<b>FUEL TANK CAPACITY</b>		66 litres / 14.5 gallons
<b>FUEL ECONOMY ESTIMATES</b> (City/Hwy/Combined)	IS 250 RWD	9.8 / 6.5 / 8.3 L/100 km 29 / 43 / 34 MPG <sup>1</sup>
	IS 250 AWD	10.4 / 7.3 / 9.0 L/100 km 27 / 39 / 31 MPG <sup>1</sup>
	IS 350 RWD	10.8 / 7.3 / 9.2 L/100 km 26 / 39 / 31 MPG <sup>1</sup>
	IS 350 AWD	11.0 / 7.7 / 9.5 L/100 km 26 / 37 / 30 MPG <sup>1</sup>

## BODY AND DIMENSIONS



## WHEELS



# MODEL SELECTOR

## 2014 IS 250



### RWD

**6-Speed Automatic  
204-hp<sup>9</sup>  
8.3 L/100 km combined<sup>1</sup>**  
Standard Trim  
Premium Package  
Luxury Package  
*F SPORT* Package  
*F SPORT* Premium Package

### AWD

**6-Speed Automatic  
204-hp<sup>9</sup>  
9.0 L/100 km combined<sup>1</sup>**  
Standard Trim  
Premium Package  
Luxury Package  
*F SPORT* Package  
*F SPORT* Premium Package  
*F SPORT* Executive Package

## 2014 IS 350



### RWD

**8-Speed SPDS Automatic  
306-hp<sup>9</sup>  
9.2 L/100 km combined<sup>1</sup>**  
Premium Package  
Luxury Package  
*F SPORT* Package  
*F SPORT* Premium Package

### AWD

**6-Speed Automatic  
306-hp<sup>9</sup>  
9.5 L/100 km combined<sup>1</sup>**  
Standard Trim  
Premium Package  
Luxury Package  
Executive Package  
*F SPORT* Package  
*F SPORT* Premium Package  
*F SPORT* Executive Package

## OPTION PACKAGES

	IS 250 RWD	IS 250 AWD	IS 350 RWD	IS 350 AWD
<b>PREMIUM PACKAGE**</b>				
18-inch split 10-spoke alloy wheels	•	•	-	-
18-inch 5-spoke alloy wheels	-	-	•	•
P225/40R18 (front) and P255/35R18 (rear) all-season tires	•	•	-	•
P225/40R18 (front) and P255/35R18 (rear) summer tires	-	-	•	-
Power tilt-and-slide moonroof	•	•	•	•
Heated steering wheel	•	•	•	•
Heated and ventilated front seats	•	•	•	•
Backup camera <sup>17</sup>	•	•	•	•
Rear outboard-seat side airbags <sup>3</sup>	•	•	•	•
Split fold-down rear seats (60/40)	•	•	•	•
Rear seat fold-down centre armrest	•	•	•	•

	IS 250 RWD	IS 250 AWD	IS 350 RWD	IS 350 AWD
<b>LUXURY PACKAGE</b> Includes Premium Package plus:				
Voice-activated HDD navigation system with Remote Touch <sup>10</sup>	•	•	•	•
Compass in navigation display	•	•	•	•
Leather seat surfaces	•	•	•	•
Driver seat memory system	•	•	•	•
Power tilt-and-telescopic steering wheel	•	•	•	•
Rain-sensing windshield wipers	•	•	•	•
Power rear window sunshade	•	•	•	•
Wood interior trim	•	•	•	•
Centre stack knee pads	•	•	•	•
Auto-dimming exterior rearview mirrors with reverse tilt	•	•	•	•
Intuitive park assist	•	•	•	•

	IS 250 RWD	IS 250 AWD	IS 350 RWD	IS 350 AWD
<b>EXECUTIVE PACKAGE</b> Includes Luxury Package plus:				
Blind Spot Monitor <sup>5</sup> with Rear Cross-Traffic Alert <sup>6</sup>	•	•	•	•
Mark Levinson <sup>®</sup> 15-speaker premium surround sound audio system <sup>2</sup>	-	-	-	•
Dynamic Radar Cruise Control <sup>4</sup>	-	-	-	•
Pre-Collision system <sup>11</sup>	-	-	-	•
Lane Departure Alert <sup>12</sup>	-	-	-	•
LED headlamps with automatic high beam feature <sup>18</sup>	-	-	-	•

	IS 250 RWD	IS 250 AWD	IS 350 RWD	IS 350 AWD
<b><i>F SPORT</i> PACKAGE*</b>				
<i>F SPORT</i> 18-inch graphite-finish alloy wheels	•	•	•	•
P225/40R18 (front) and P255/35R18 (rear) all-season tires	•	•	-	•
P225/40R18 (front) and P255/35R18 (rear) summer tires	-	-	•	-
<i>F SPORT</i> suspension tuning	•	•	•	•
<i>F SPORT</i> Vehicle Dynamics Integrated Management (VDIM) <sup>7</sup>	•	•	•	•
<i>F SPORT</i> front mesh grille	•	•	•	•
<i>F SPORT</i> front bumper	•	•	•	•
<i>F SPORT</i> front fender badges	•	•	•	•
<i>F SPORT</i> front seats	•	•	•	•
<i>F SPORT</i> instrumentation gauges	•	•	•	•
<i>F SPORT</i> perforated leather-trimmed steering wheel and shift knob	•	•	•	•
<i>F SPORT</i> aluminum pedals	•	•	•	•
<i>F SPORT</i> door sill plates	•	•	•	•
<i>F SPORT</i> silver performance interior trim	•	•	•	•

	IS 250 RWD	IS 250 AWD	IS 350 RWD	IS 350 AWD
<b><i>F SPORT</i> PACKAGE</b> continued				
Centre stack knee pads	•	•	•	•
Black headliner	•	•	•	•
Rear outboard-seat side airbags <sup>3</sup>	•	•	•	•
Split fold-down rear seats (60/40)	•	•	•	•
Rear seat fold-down centre armrest	•	•	•	•
Drive Mode Select with Sport+ Mode	-	-	•	•
Larger diameter front ventilated disc brakes	-	-	•	-
Adaptive Variable Suspension (AVS)	-	-	•	•
Variable Gear Ratio Steering (VGRS)	-	-	•	-

	IS 250 RWD	IS 250 AWD	IS 350 RWD	IS 350 AWD
<b><i>F SPORT</i> PREMIUM PACKAGE</b> Includes <i>F SPORT</i> Package plus:				
Voice-activated HDD navigation system with Remote Touch <sup>10</sup>	•	•	•	•
Compass in navigation display	•	•	•	•
Power tilt-and-slide moonroof	•	•	•	•
Heated steering wheel	•	•	•	•
Backup camera <sup>17</sup>	•	•	•	•

	IS 250 RWD	IS 250 AWD	IS 350 RWD	IS 350 AWD
<b><i>F SPORT</i> EXECUTIVE PACKAGE</b> Includes <i>F SPORT</i> Premium Package plus:				
Mark Levinson <sup>®</sup> 15-speaker premium surround sound audio system <sup>2</sup>	-	•	-	•
Dynamic radar cruise control <sup>4</sup>	-	•	-	•
Pre-Collision system <sup>11</sup>	-	•	-	•
Blind Spot Monitor <sup>5</sup> with Rear Cross-Traffic Alert <sup>6</sup>	-	•	-	•
Power rear window sunshade	-	•	-	•
Auto-dimming exterior rearview mirrors with reverse tilt	-	•	-	•

• Equipment included in Package - Not available in Package

\*\* PREMIUM PACKAGE contents are standard equipment on IS 350 RWD

\* IS 350 RWD Power tilt-and-slide moonroof unavailable with *F SPORT* Package