

STANDARD LUXURY

LUXURY AND CONVENIENCE:

- SmartAccess with push-button start/stop¹⁴
- Dual-zone automatic climate control with electrostatic temperature adjustment
- White LED interior illumination with fadeout

SEATING AND TRIM:

- NuLuxe seat surfaces
- Heated front sport seats
- Leather-wrapped steering wheel
- Leather-wrapped shift knob
- Piano black trim accents
- 10-way (including lumbar) power-adjustable driver seat
- 8-way power-adjustable front passenger seat
- 60/40 folding rear seats

AUDIO, COMMUNICATIONS AND INSTRUMENTATION:

- 8-Speaker Premium Lexus Audio System
- 7" Lexus Display Audio System
- Integrated XM[®] Satellite Radio¹⁵
- USB port
- Bluetooth[®] audio profile for wireless integration of compatible music players and automatic phonebook synchronization¹³
- Drive Mode Select with ECO, Normal and Sport modes

STANDARD SAFETY AND SECURITY

ACTIVE SAFETY:

- Vehicle Dynamics Integrated Management (VDIM)⁷
- Direct Tire Pressure Monitor System¹⁶
- High-Intensity Discharge (HID) headlamps with dynamic auto-levelling
- LED daytime running lamps
- Integrated fog lamps (excluding *F SPORT* packages)
- Water-repellent front-door glass
- Variable-intermittent windshield wipers with de-icer
- LED brake lamps

PASSIVE SAFETY:

- Driver and front passenger airbag system (SRS)³
- Front seat-mounted side airbags³
- Front and rear side curtain airbags³
- Rear side airbags
- Driver and front passenger knee airbags³
- Child Restraint System (CRS) tether anchor brackets for rear outboard seats

SECURITY:

- Vehicle theft-deterrent system
- Engine-immobilizer system

STANDARD SPECIFICATIONS

CURB WEIGHT

IS 200t RWD	1,625 kg / 3,583 lb
IS 300 AWD	1,695 kg / 3,737 lb
IS 350 AWD	1,695 kg / 3,737 lb

ENGINE TYPE

IS 200t RWD	in-line, 4-cylinder
IS 300 AWD	V6, direct and port fuel injection
IS 350 AWD	V6, direct and port fuel injection

DISPLACEMENT

IS 200t RWD	2.0 litres
IS 300 AWD	3.5 liters
IS 350 AWD	3.5 litres

HORSEPOWER @ RPM

IS 200t RWD	241 hp @ 5,800 ⁹
IS 300 AWD	255 hp @ 6,400 ⁹
IS 350 AWD	306 hp @ 6,400 ⁹

TORQUE @ RPM

IS 200t RWD	258 lb-ft @ 1,650 ⁹
IS 300 AWD	236 lb-ft @ 2,000 ⁹
IS 350 AWD	277 lb-ft @ 4,800 ⁹

TRANSMISSION

- IS 200t RWD > 8-speed automatic Sport Direct Shift Control Sequential multi-mode shifter
- IS 300 AWD > 6-speed automatic Super Electronically Controlled Transmission (Super ECT) Sequential multi-mode shifter
- IS 350 AWD > 6-speed automatic Super Electronically Controlled Transmission (Super ECT) Sequential multi-mode shifter

TIRES

- IS 200t RWD > P225/45R17, All-season P225/40R18 (front), P255/35R18 (rear) (optional)
- IS 300 AWD > P225/45R17, All-season P225/40R18 (front) (optional) P255/35R18 (rear) (optional)
- IS 350 AWD > P225/40R18 (front) P255/35R18 (rear)

FUEL TANK CAPACITY

66 litres / 14.5 gallons

FUEL ECONOMY ESTIMATES

(City/Hwy/Combined)

IS 200t RWD	10.6/7.2/9.0 L/100 km 27/39/31 mpg ¹
IS 300 AWD	12.6/9.2/11.1 L/100 km 22/31/25 mpg ¹
IS 350 AWD	12.6/9.2/11.1 L/100 km 22/31/25 mpg ¹

BODY AND DIMENSIONS

HEIGHT

1,430 mm (56.3")

WIDTH

1,810 mm (71.3")

WHEELBASE

2,800 mm (110.2")

OVERALL LENGTH

4,665 mm (183.7")

WHEELS



IS 200t RWD, IS 300 AWD
17" 10-spoke alloy wheels



IS 300 AWD
18" split 10-spoke alloy wheels



IS 350 AWD
18" 5-spoke alloy wheels



F SPORT
18" double parallel 5-spoke alloy wheels

ACCESSORIES



BODYSIDE MOULDING



CARGO LINER



CARGO NET



PAINT PROTECTION FILM



REAR SPOILER



REMOTE ENGINE STARTER



F SPORT DUAL PERFORMANCE EXHAUST

EXTERIOR



ULTRA WHITE.....0083



EMINENT WHITE.....0085



ATOMIC SILVER.....0117



NEBULA GREY PEARL.....01H9



OBSIDIAN.....0212



STARLIGHT BLACK MICA.....0217



REDLINE.....03T2



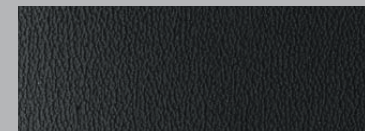
ULTRASONIC BLUE MICA 2.0.....08X1

INTERIOR



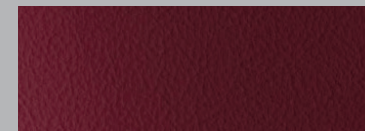
NULUXE LEATHER

FLAXEN



NULUXE LEATHER

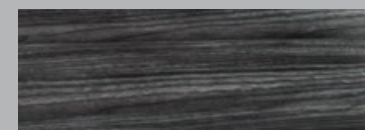
BLACK



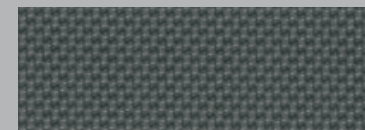
NULUXE

RIOJA RED

INTERIOR TRIM



DARK GREY WOOD



ALUMINUM



PIANO BLACK

2016 IS

PREMIUM PACKAGE
LUXURY PACKAGE
EXECUTIVE PACKAGE

PREMIUM PACKAGE	IS 200t	IS 300	IS 350
18" aluminum alloy wheels	-	•	-
Heated steering wheel	-	•	-
Heated & ventilated front seats	-	•	-
Backup camera ¹⁷	-	•	-
Power moonroof	-	•	-

LUXURY PACKAGE <i>Premium Package PLUS:</i>	IS 200t	IS 300	IS 350
Voice-activated navigation system with Remote Touch & compass ¹⁰	-	•	Δ
Leather-wrapped power tilt & telescopic steering wheel	-	•	Δ
Driver seat memory	-	•	Δ
Leather seat surfaces	-	•	Δ
Single in-dash DVD ¹⁹	-	•	Δ
Reverse auto-tilting exterior mirrors	-	•	Δ
Rain sensing wipers	-	•	Δ
Clearance and backup sensors	-	•	Δ
Blind Spot Monitor ⁵	-	•	Δ
Rear Cross-Traffic Alert ⁶	-	•	Δ
Power rear window sunshade	-	•	Δ

EXECUTIVE PACKAGE	IS 200t	IS 300	IS 350
15-speaker Mark Levinson [®] surround sound audio system ²	-	-	•
Leather-wrapped steering wheel	-	-	•
LED headlamps	-	-	•
Automatic high beam ¹⁸	-	-	•
Lane Departure Alert ¹²	-	-	•
Dynamic Radar Cruise Control ⁴	-	-	•
Pre-collision System ¹¹	-	-	•

- Equipment included in Package
- Not available in Package
- Δ Standard Equipment

2016 IS

SERIES 1
SERIES 2
SERIES 3

F SPORT SERIES 1

	IS 200t	IS 300	IS 350
18" F SPORT wheels	•	•	-
3-spoke F SPORT leather-wrapped steering wheel	•	•	-
F SPORT centre wheel ornament	•	•	-
F SPORT shift knob	•	•	-
Heated and ventilated F SPORT front seats	•	•	-
LFA full TFT instrument cluster	•	•	-
F SPORT aero package	•	•	-
F SPORT scuff plates	•	•	-
F SPORT front grille	•	•	-
Power moonroof	•	•	-
Rain sensing wipers	•	•	-

F SPORT SERIES 2

F SPORT Series 1 PLUS:

	IS 200t	IS 300	IS 350
18" F SPORT wheels	-	-	•
3-spoke F SPORT leather-wrapped steering wheel	-	-	•
Heated steering wheel	-	•	Δ
F SPORT centre wheel ornament	-	-	•
F SPORT shift knob	-	-	•
F SPORT seats	-	-	•
Voice-activated navigation system with Remote Touch & compass ¹⁰	-	•	Δ
Single in-dash DVD ¹⁹	-	•	Δ
Backup camera ¹⁷	-	•	Δ
LFA full TFT instrument cluster	-	-	•
F SPORT aero package	-	-	•
F SPORT scuff plates	-	-	•
F SPORT front grille	-	-	•
LED headlamps	-	-	•
Adaptive Variable Suspension (AVS)	-	-	•
Blind Spot Monitor ⁵	-	•	Δ
Rear Cross Traffic Alert ⁶	-	•	Δ

F SPORT SERIES 3

Model-Specific F SPORT Series 2 PLUS:

	IS 200t	IS 300	IS 350
15-speaker Mark Levinson® surround sound audio system ²	-	•	•
Power rear window shade	-	•	•
Dynamic Radar Cruise Control ⁴	-	•	•
Pre-collision System ¹¹	-	•	•

- Equipment included in Package
- Not available in Package
- Δ Standard Equipment

With all Lexus IS F SPORT models, an upgrade to the premium colour Ultrasonic Blue Mica 2.0 is available.